

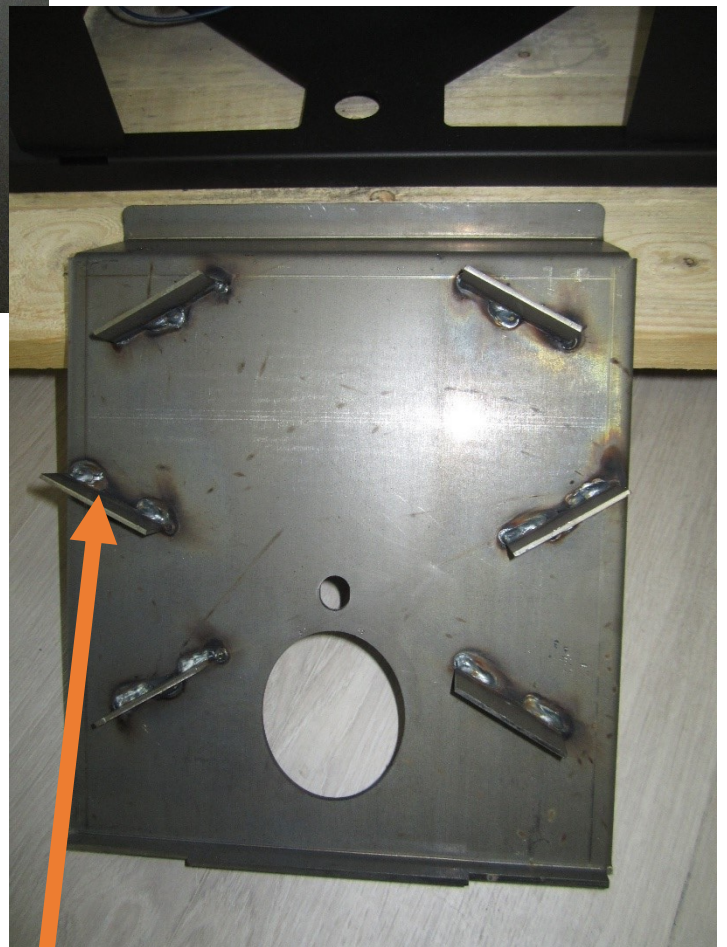


CLEANING OF THE 9 KW STOVE (RITA/POLY/GIADA ALINA/BETTY/KAREN)

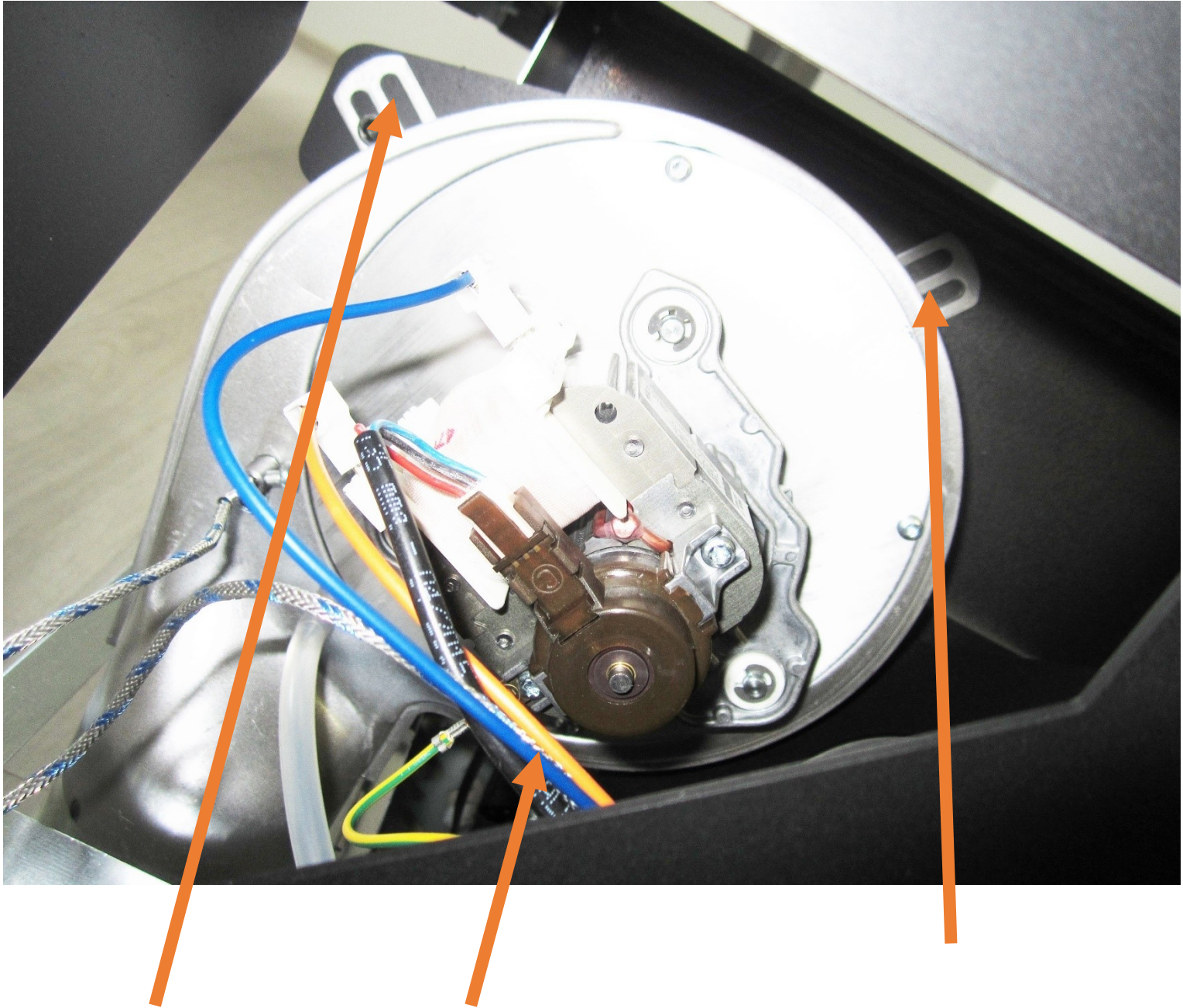




UNSCREW THE CENTRAL SCREW WHICH IT
BLOCKS THE CHAMBER OF COMBUSTION



CLEAN THE SMOKE TOUR AND THE INTERIOR
PART OF THE CHAMBER OF COMBUSTION



UNSCREW THE 3 SCREWS WHICH FIX THE
SMOKE MOTOR TO THE FURNACE AND REMOVE
THE MOTOR